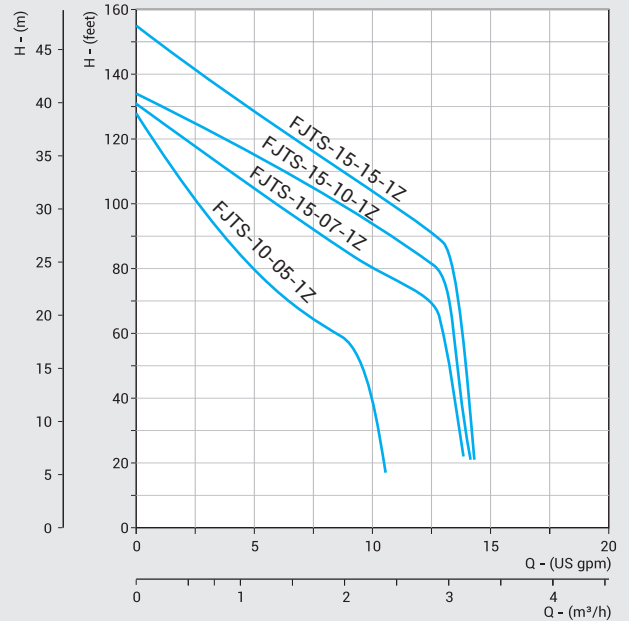


## STAINLESS STEEL SELF-PRIMING JET PUMPS (FJTBSERIES)



### PERFORMANCE CURVES



### PERFORMANCE TABLE

PUMP MODEL	MOTOR POWER		NOMINAL PUMP SIZE (Suc x Del)	m <sup>3</sup> /h	Flow Rate (US gpm)						
	HP	kW			0	0,57	1,13	1,7	2,27	2,84	3,18
FJTS-10-05-1Z	0,5	0,37	1" x 1"		0	2,5	5	7,5	10	12,5	14
FJTS-15-07-1Z	0,75	0,55	1" x 1"	Total Head in feet	127	101	80	64	40	20(10,5gpm)	
FJTS-15-10-1Z	1,0	0,75	1" x 1"		131	117	104	92	80	70	22(13,2gpm)
FJTS-15-15-1Z	1,5	1,1	1" x 1"		134	125	115	105	94	82	21(13,5gpm)
					155	141	128	115	103	91	21

In view of continuous developments the information / performance / descriptions / specifications / Illustrations are subject to change without notice.

### SPECIFICATIONS

Power Range	: 0,5 HP - 1,5 HP
Speed	: 3450 rpm
Versions	: 1Ph, 110/220V, 60Hz (Permanent Split Capacitor-PSC) Incorporated with thermal overload protector 3Ph, 220/380/460V, 60Hz
Direction of Rotation	: Clock wise viewed from driving end
Type of Duty	: S1 (Continuous)
Degree of Protection	: IP 55
Class of insulation	: "F" / "B"
Suction & Delivery Sizes	: 1" x 1" BSP / NPT

### APPLICATIONS

- Shallow wells ■ Houses ■ Small farms ■ Garden ■ Domestic
- Pressure boosting ■ Car washing ■ Small industrie
- Drinking water supply ■ Food processing Industries.

### MATERIALS OF CONSTRUCTION

Pump Casing	: S.S 304
Motor Frame	: Aluminium
Impeller	: S.S 304
Shaft	: S.S 304 + Carbon Steel #45
Mechanical Seal	: Carbon & Ceramic

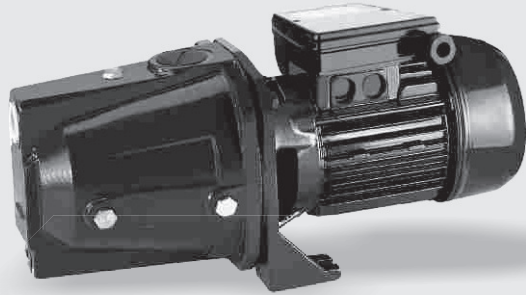
### PUMP OPERATING LIMITS

Maximum Head	: 148 ft / 44 m
Maximum Suction lift	: 23 ft / 7 m
Maximum liquid Temperature	: 140°F / 60°C
Maximum Ambient Temperature	: 122°F / 50°C

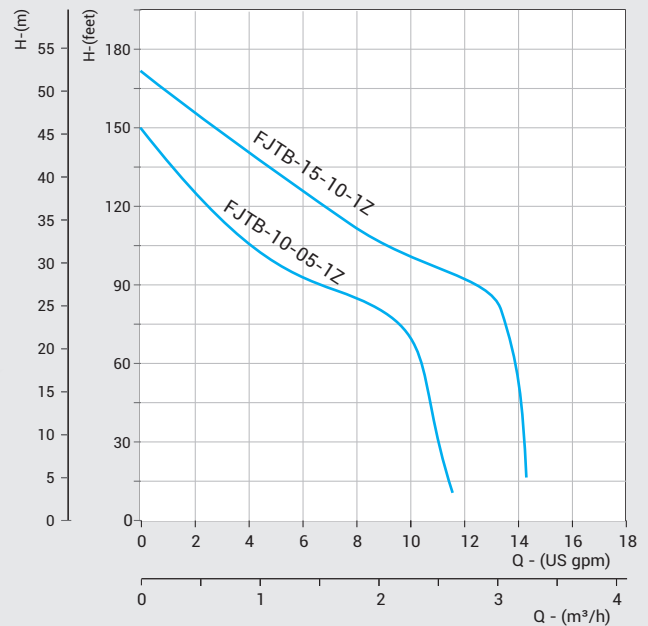
### FEATURES

- High operating efficiency resulting in lower power consumption
- Good suction lift characteristics
- Dynamically balanced rotating parts including rotor and impeller
- Compact and rigid construction ■ Inbuilt thermal overload protector in all single phase pumps
- All wet parts are made of corrosion resistant stainless steel material.

## SELF-PRIMING JET PUMPS (FJT B SERIES)



### PERFORMANCE CURVES



### PERFORMANCE TABLE

PUMP MODEL	MOTOR POWER		NOMINAL PUMP SIZE (Suc x Del)	m³/h	0	0,45	0,9	1,36	1,82	2,27	2,72	3,18
	HP	kW			US-gpm	0	2	4	6	8	10	12
FJT B-10-05-1Z	0,5	0,37	1" x 1"	Total Head in feet	150	124	105	92	85	72	10 (11,7gpm)	
FJT B-15-10-1Z	1,0	0,75	1" x 1"		171	155	139	125	110	101	92	16 (14,2gpm)

In view of continuous developments the information / performance / descriptions / specifications / Illustrations are subject to change without notice.

### SPECIFICATIONS

Power Range	: 0,5 HP - 1,0 HP
Speed	: 3450 rpm
Versions	: 1Ph, 110/220V, 60Hz (Permanent Split Capacitor-PSC) Incorporated with thermal overload protector 3Ph, 220/380/460V, 60Hz
Direction of Rotation	: Clock wise viewed from driving end
Type of Duty	: S1 (Continuous)
Degree of Protection	: IP 55
Class of insulation	: "F" / "B"
Suction & Delivery Sizes	: 1" x 1" BSP / NPT

### APPLICATIONS

- Shallow Well ■ Houses ■ Irrigation ■ Small Farms
- Domestic ■ Pressure Boosting units
- Small Industries ■ Washing Systems.

### MATERIALS OF CONSTRUCTION

Pump Casing	: Cast Iron
Motor Frame	: Aluminium
Impeller	: Brass
Shaft	: S.S 304 + Carbon Steel #45
Mechanical Seal	: Carbon & Ceramic

### PUMP OPERATING LIMITS

Maximum Head	: 177 ft / 54 m
Maximum Suction lift	: 23 ft / 7 m
Maximum liquid Temperature	: 104°F / 40°C
Maximum Ambient Temperature	: 122°F / 50°C

### FEATURES

- High operating efficiency resulting in lower power consumption
- Good suction lift characteristics
- Dynamically balanced rotating parts including rotor and impeller
- Compact and rigid construction
- Inbuilt thermal overload protector in all single phase pumps.