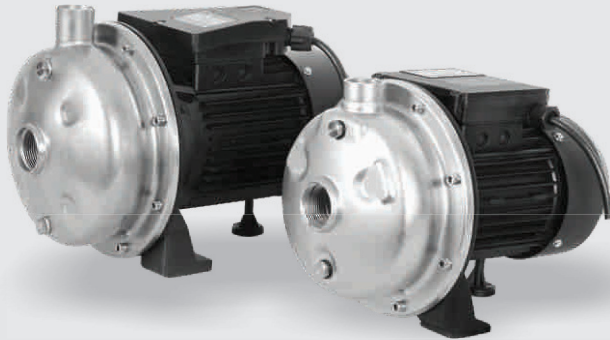
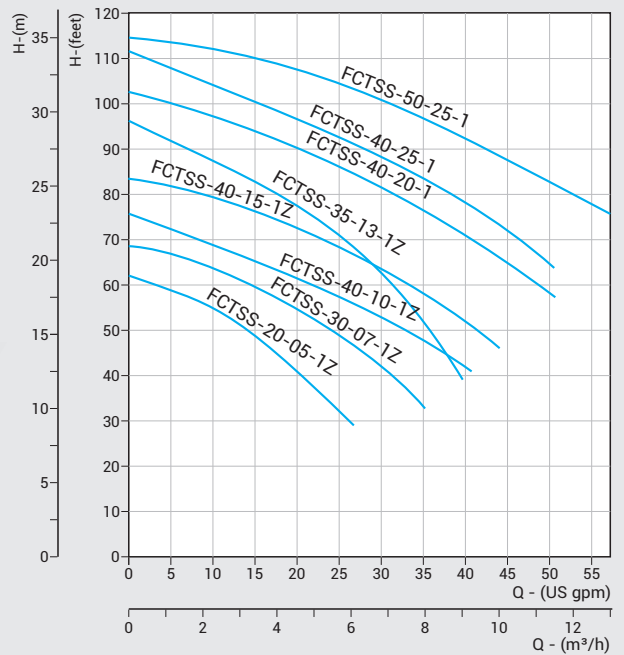


STAINLESS STEEL CENTRIFUGAL PUMPS (FCTSS SERIES)



PERFORMANCE CURVES



PERFORMANCE TABLE

PUMP MODEL	MOTOR POWER		NOMINAL PUMP SIZE (Suc x Del)	m ³ /h	Flow Rate (Q)										
	HP	kW			0	2,27	4,54	6,81	9,08	11,36	13,63				
				US-gpm	0	10	20	30	40	50	60				
FCTSS-20-05-1Z	0,5	0,37	1 ¼" x 1"	Total Head in feet	62	55	40	30 (26gpm)							
FCTSS-30-07-1Z	0,75	0,55	1 ¼" x 1"		69	63	54	42		33 (35gpm)					
FCTSS-40-10-1Z	1,0	0,75	1 ¼" x 1"		75	69	61	53		39					
FCTSS-35-13-1Z	1,3	1,0	1 ¼" x 1"		96	88	78	63		42					
FCTSS-40-15-1Z	1,5	1,1	1 ¼" x 1"		83	79	72	64		52		46 (44gpm)			
FCTSS-40-20-1	2,0	1,5	1 ¼" x 1"		102	98	90	81		71		58			
FCTSS-40-25-1	2,5	1,85	1 ¼" x 1"		112	104	97	88		78		64			
FCTSS-50-25-1	2,5	1,85	1 ½" x 1 ¼"		116	112	108	101		92		83		76 (57gpm)	

In view of continuous developments the information / performance / descriptions / specifications / Illustrations are subject to change without notice.

SPECIFICATIONS

Power Range	: 0,5 HP - 40 HP, 2 Pole
Speed	: 3450 rpm
Versions	: 1Ph, 110/220V, 60Hz (Upto 1,5HP) 1Ph, 220V, 60Hz (2HP & above) (Permanent Split Capacitor-PSC) Incorporated with thermal overload protector 3Ph, 220/380/460V, 60Hz
Direction of Rotation	: Clock wise viewed from driving end
Type of Duty	: S1 (Continuous)
Degree of Protection	: IP 55
Class of insulation	: "F" / "B"
Suction & Delivery Sizes	: 1 ¼" x 1", 1 ½" x 1 ¼", 2" x 2" BSP / NPT

APPLICATIONS

- Residential ■ Irrigation ■ Small Farms
- Pressure Boosting Units ■ Industrial Water Supply
- Food Processing Industries ■ Washing Systems.

MATERIALS OF CONSTRUCTION

Pump Casing	: S.S 304
Motor Frame	: Aluminium
Impeller	: S.S 304
Shaft	: S.S 304 + Carbon Steel #45
Mechanical Seal	: Carbon & Ceramic

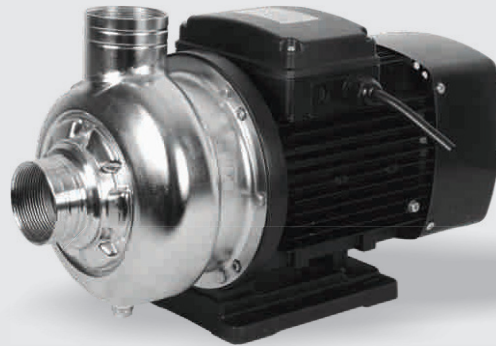
PUMP OPERATING LIMITS

Maximum Head	: 115 ft / 35 m
Maximum Suction lift	: 23 ft / 7 m
Maximum Liquid Temperature	: 140°F / 60°C
Maximum Ambient Temperature	: 122°F / 50°C

FEATURES

- High Operating efficiency resulting in lower power consumption
- Good suction lift characteristics ■ Dynamically balanced rotating parts
- Balanced and rigid construction
- Inbuilt thermal overload protector in all single phase pumps
- Complete SS construction more suitable for potable water.

STAINLESS STEEL CENTRIFUGAL PUMPS (FCTSS SERIES)



PERFORMANCE TABLE

PUMP MODEL	MOTOR POWER		NOMINAL PUMP SIZE (Suc x Del)	m ³ /h	0	6,81	10,22	13,63	17,03	20,44	23,85	27,25	30,66	35,88
	HP	kW			US-gpm	0	30	45	60	75	90	105	120	135
FCTSS-80-15-1Z	1,5	1,1	2" x 2"	Total Head in feet	70	62	58	53	47	41	34	27		
FCTSS-90-20-1	2,0	1,5	2" x 2"		80	74	70	64	58	50	42	33	26 (130gpm)	
FCTSS-100-30-1	3,0	2,2	2" x 2"		83	77	73	70	66	62	56	50	41	33 (145gpm)
FCTSS-110-40-3I	4,0	3,0	2" x 2"		92	85	82	78	74	70	65	59	52	36

In view of continuous developments the information / performance / descriptions / specifications / Illustrations are subject to change without notice.

PERFORMANCE CURVES

